

UN_883/3000

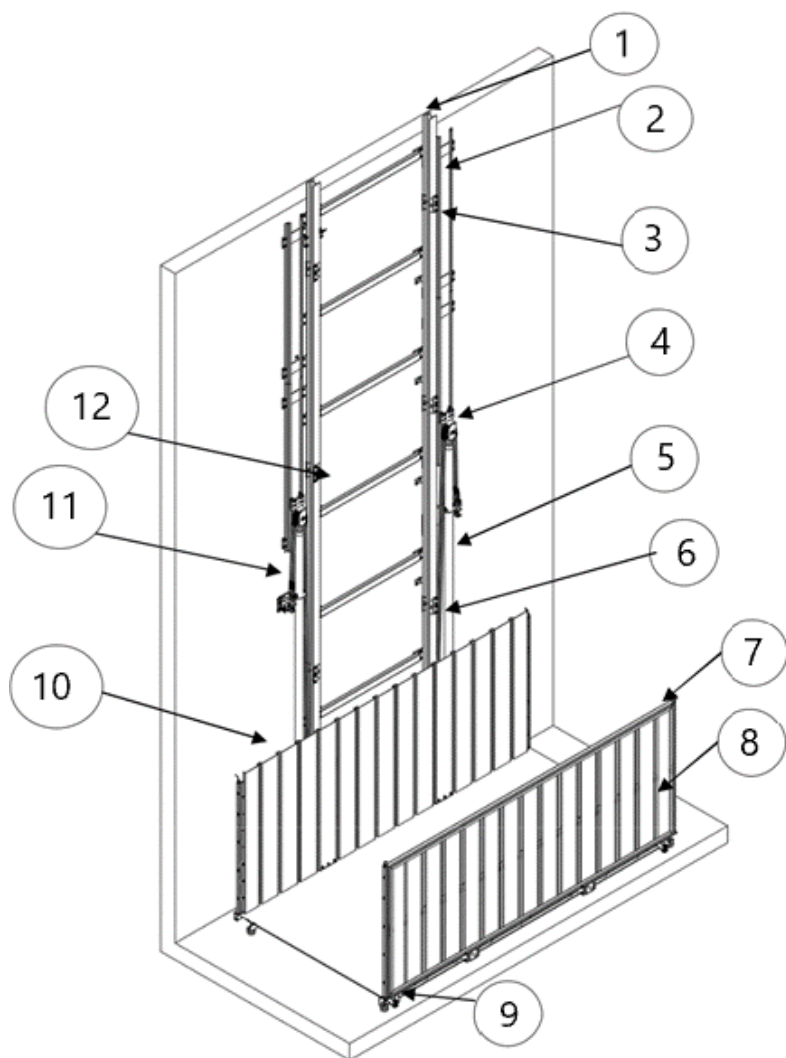
PLANNING DATA

UNIQUE INDUSTRY

Contents

1. Product Description	2
2. Technical Information	3
3. Applied forces	4
3.1 Forces on the shaft wall	4
3.2 Forces on the pit	5
4. Top view – Narrow mechanism	6
5. Top views – Wide mechanism.....	7
6. Additional designs.....	8
6.1 Safety locking device - Metallic chain	8
6.2 Detailed view - wide.....	9

1. Product Description



Description

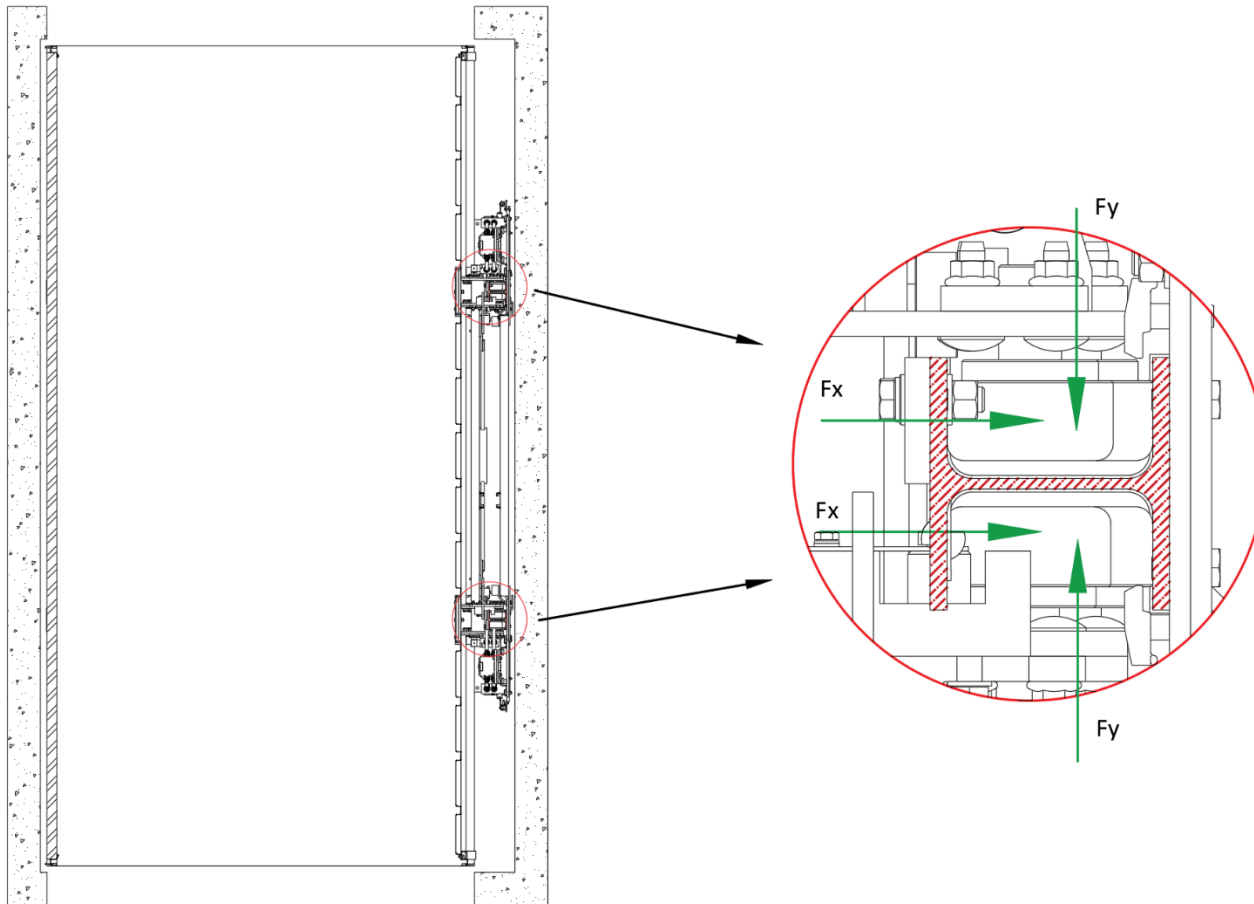
1. Steel beam type HEA (H-shape)
2. Guide rails of the hydraulic cylinder
3. Guide (column) connection
4. Base for the hydraulic cylinder
5. Hydraulic cylinder
6. Guide rail(column) connection
7. Photo curtain
8. Balustrades
9. Safety locks
10. Safety balustrades
11. Lift chain
12. Steel beam type HSS (hallow

2. Technical Information

Loading capacity	3000
Clear Platform Depth	1950 - 5500 mm
Clear Platform Width	600 - 2550 mm
Max Travel	12 m
Stops	4
Motor	5.5 Hp
Travel speed	0.12 m/s
Pit depth	Min 250 mm
Minimum headroom	2500 mm
Columns	HEA 120
Diameter of the hydraulic cylinder	Φ105 x 7,5
Metallic chain	BL544
Rubber hose inner diameter	R2AT ½'
Block valve	CBF
Legislation and standards	European directive on machinery 2006 / 42 / EC

3. Applied forces

3.1 Forces on the shaft wall



Max Forces

The calculations were made with maximum load capacity of 3000 kg and platform dimensions 5500 x 2550 mm

Case of load shift regarding x axis

$$F_x = 165.620 \text{ N}$$

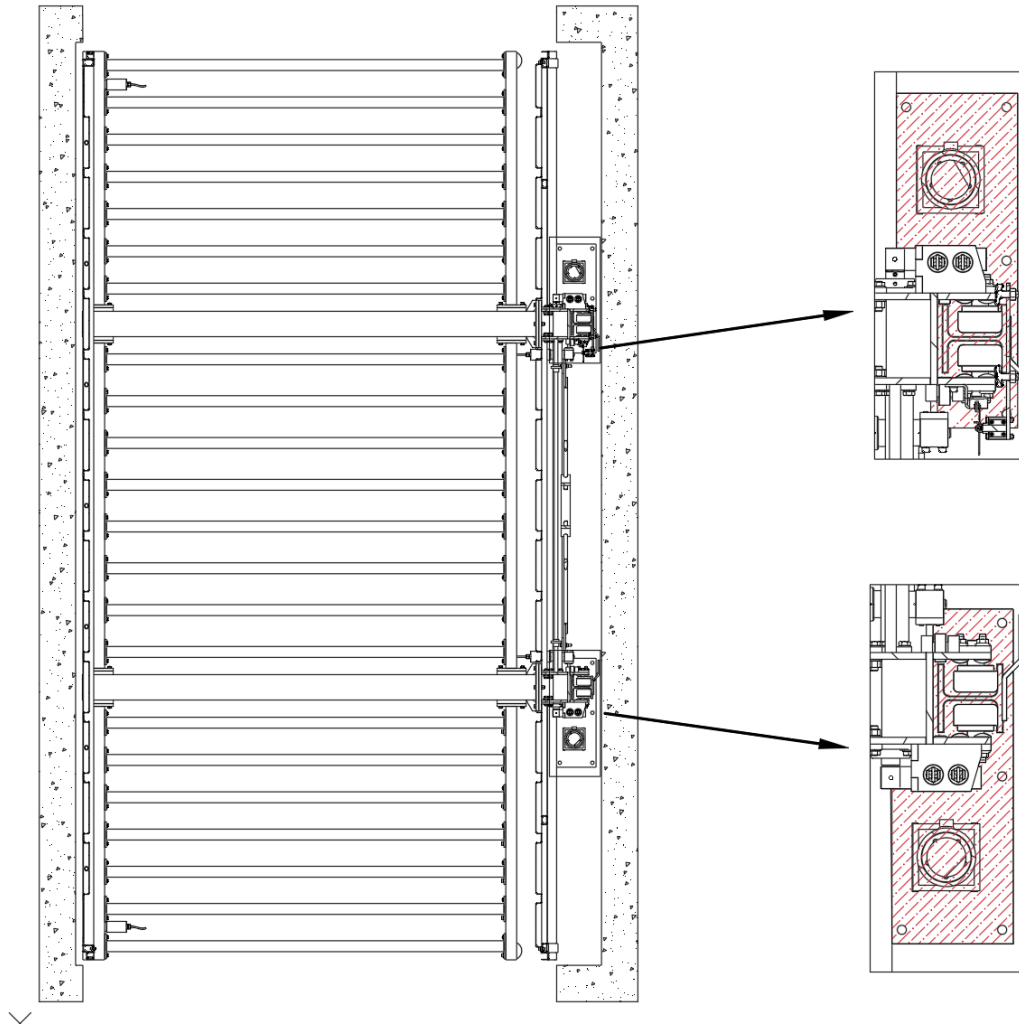
$$F_y = 65.370 \text{ N}$$

Case of load shift regarding y axis

$$F_x = 165.620 \text{ N}$$

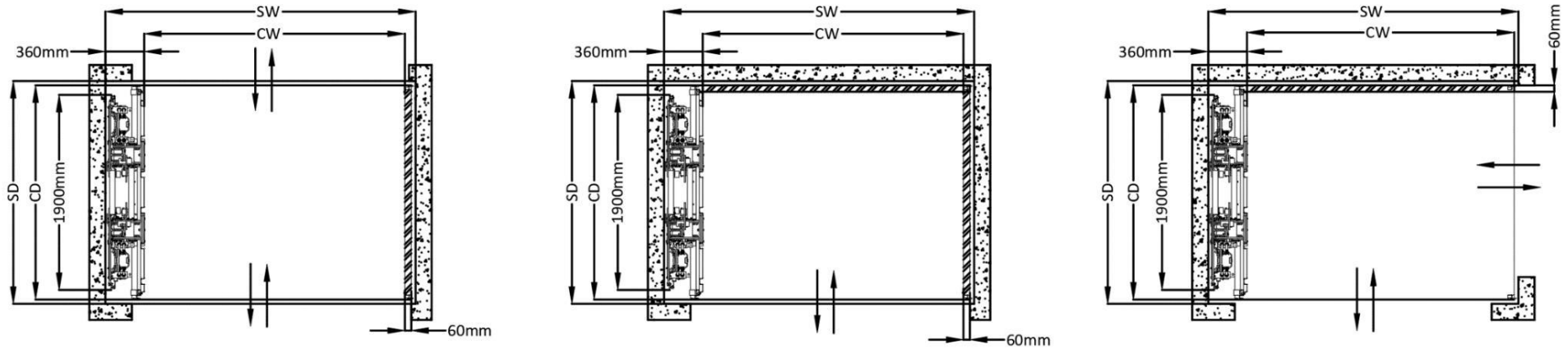
$$F_y = 173.561 \text{ N}$$

3.2 Forces on the pit



Forces are applied on the red area and are 250.000 N

4. Top view – Narrow mechanism

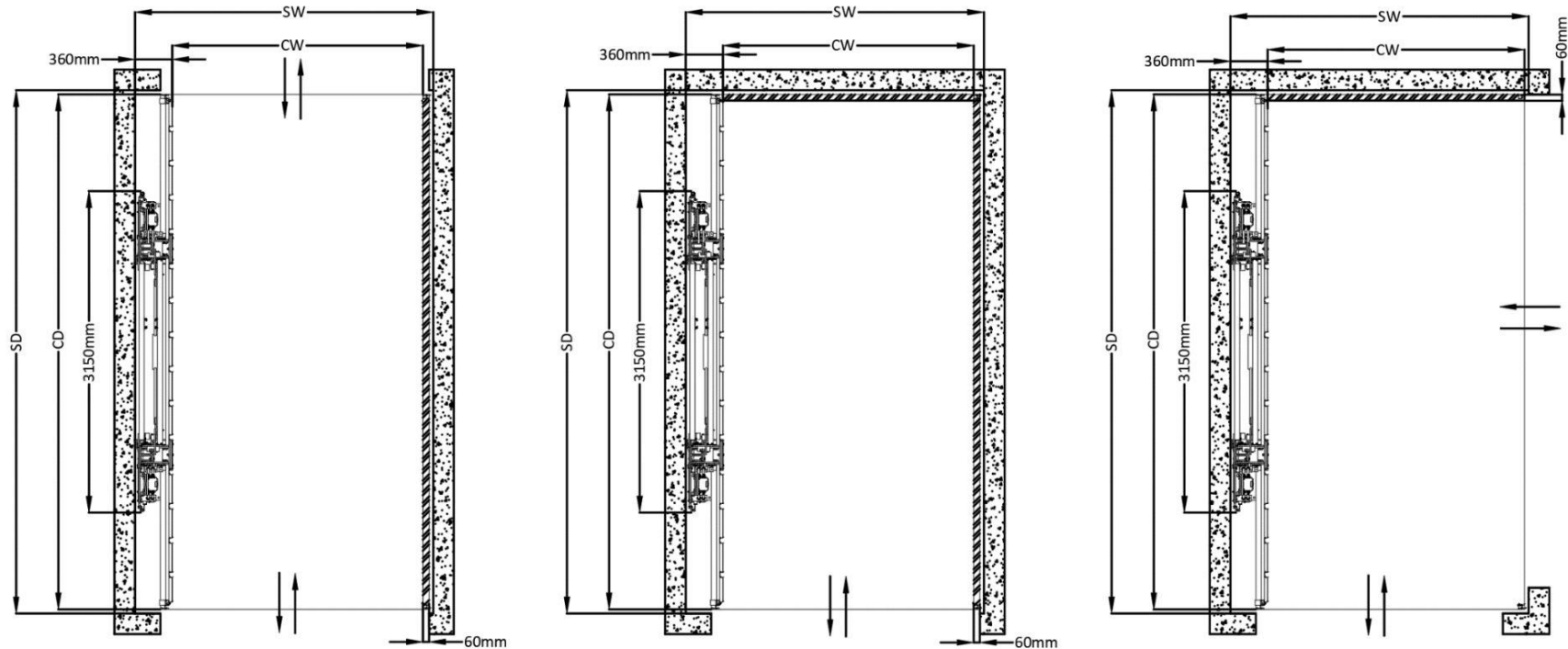


		Min	Max
SD	Shaft Depth	2010	3260
CD	Clear Depth	1950	3200
SW	Shaft Width	1050	3000
CW	Clear Width	600	2550

Distance between shaft and platform is estimated 30 mm.

*Any possible combination of entrance and exits from the 3 sides is possible.

5. Top views – Wide mechanism



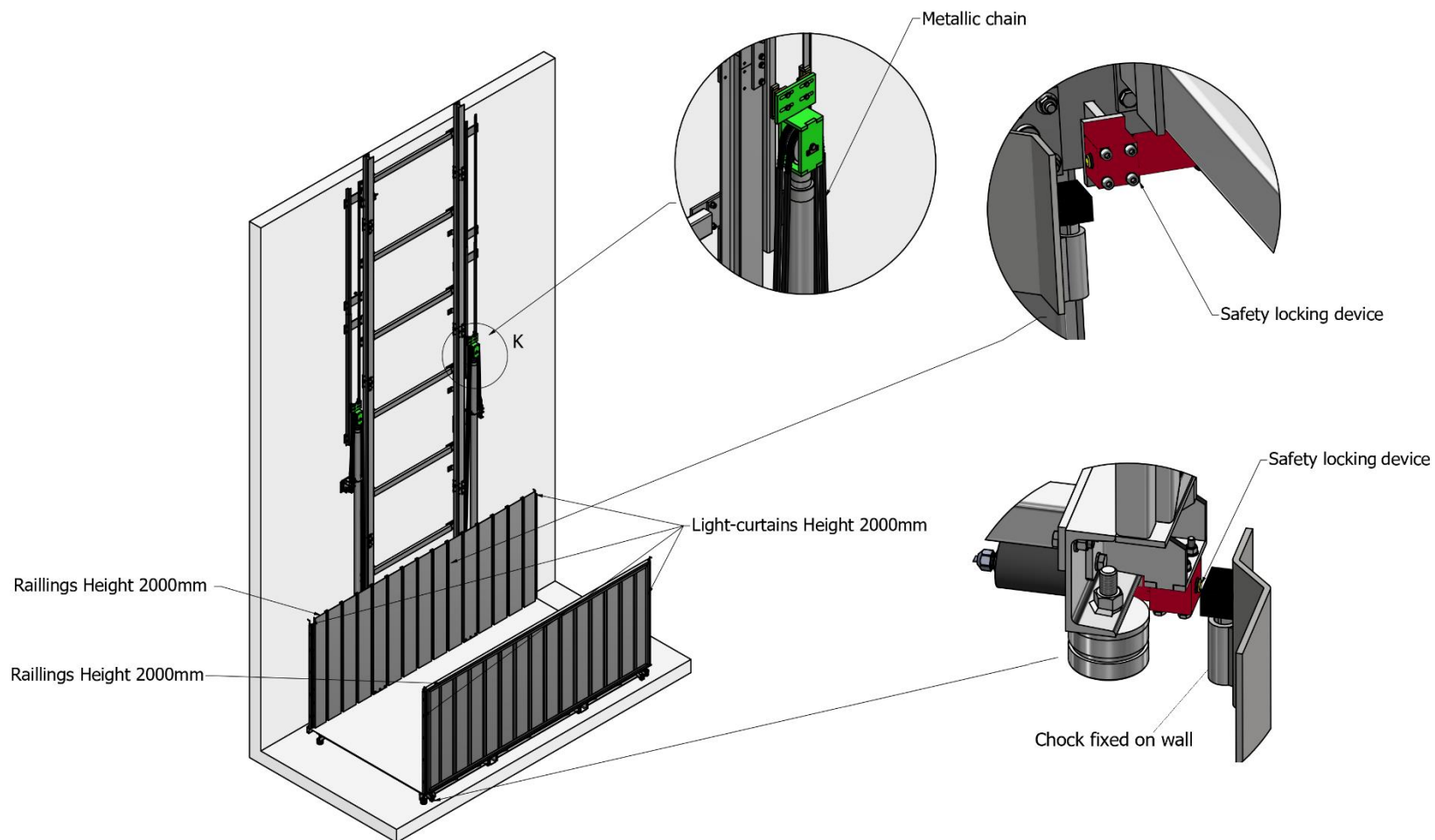
		Min(mm)	Max(mm)
SD	Shaft Depth	3260	5560
CD	Clear Depth	3200	5500
SW	Shaft Width	1050	3000
CW	Clear Width	600	2550

Distance between shaft and platform is estimated 30 mm.

*Any possible combination of entrance and exits from the 3 sides is possible.

6. Additional designs

6.1 Safety locking device - Metallic chain



6.2 Detailed view - wide

